

**Administering drugs
and patient information,
organising orders**

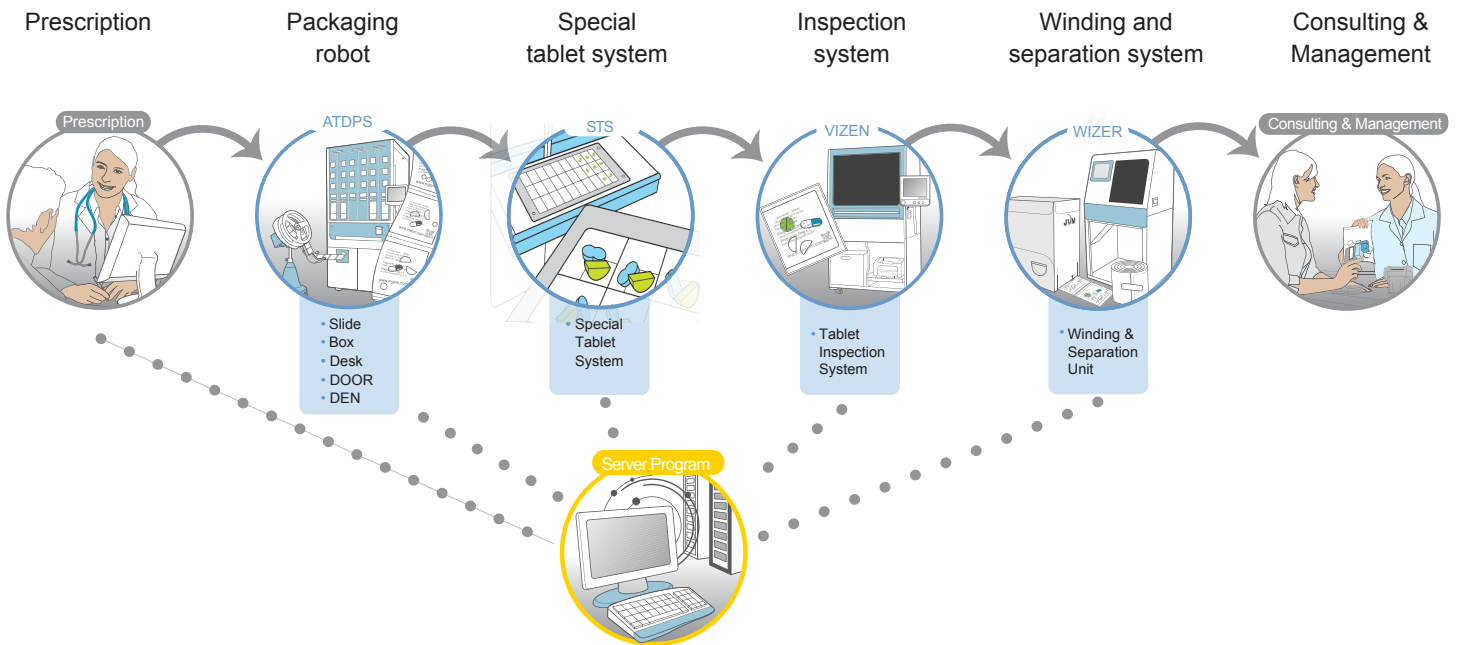
OnCube combines an efficient packaging process with maximum increased patient safety. It allows for the entire production process to be managed, operated and monitored, offering extensive functionality for processing patient and medication data from an OCS file (a file containing the prescription details which is generated by the pharmacy or hospital system), management of medication and system users.

From a single central database it is possible to control the packaging machines. OnCube is also able to monitor the other optional devices such as the VIZEN (sachet inspection system), the WIZER (winding and separation of sachet strings per patient) and the STS LS (for dispensing special medication, or parts of tablets). A standard interface for your country is used for the link to your Pharmacy Information System.

OnCube

Latest generation packing process management software

OnCube



- Workflow control for the total order process in one program.
- Drug data administration using a unique selectable number registration.
- Patient & prescription data scanning and processing.
- Password protected and user-set security.
- Current status of each machine can be quickly and seen on display.
- Production reports generated by system.
- Extensive error logging.
- Supports 2D GS1 barcode functionality.
- One database contains all data for organisational ease.
- Software is G(a)MP compliant; hardware is GMP compliant.
- Displays which machine is most efficient to use for specific operations.
- Optimum planning via the STS Load Station for special tablets.
- User-friendly interface.
- System always accessible – even during production.
- Access to OnCube remotely using the OnCube web service.
- Optimised algorithms calculate best order for production on each machine.

Integration of a personal radio frequency code

A plastic chip with unique radio frequency identification (RFID) replaces user name and password login. By holding the chip against the reader access is gained to the system and all actions are logged per user.