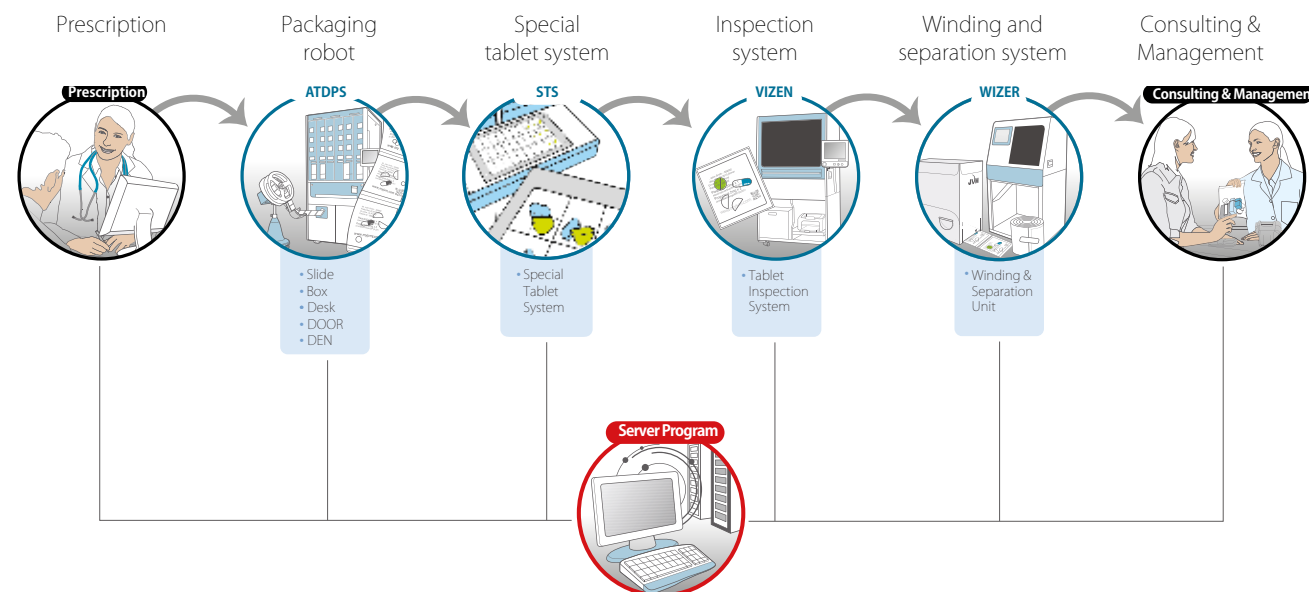


# OnCube SOFTWARE



- Workflow control for the total order process in one program.
- Drug data administration using a unique selectable number registration.
- Patient & prescription data scanning and processing.
- Password protected and user-set security.
- Current status of each machine can be quickly and seen on display.
- Production reports generated by system.
- Extensive error logging.
- Supports 2D GS1 barcode functionality.
- One database contains all data for organisational ease.
- Software is G(A)MP compliant; hardware is GMP compliant.
- Displays which machine is most efficient to use for specific operations.
- Optimum planning via the STS Load Station for special tablets.
- User-friendly interface.
- System always accessible – even during production.
- Access to OnCube remotely using the OnCube web service.
- Optimised algorithms calculate best order for production on each machine.

## Integration of a personal radio frequency code

A plastic chip with unique radio frequency identification (RFID) replaces user name and password login. By holding the chip against the reader access is gained to the system and all actions are logged per user.

## Leasing/rental

JVM Europe understands that growth is only possible when you have the capital to invest. But capital is not always readily available. That's why we are offering a solution to help you grow while at the same time helping you to control your cash flow and operating capital.

All information contained herein may not be duplicated, copied, altered, or quoted without the express written consent of JVM.

**JVM**  
Hanmi Family Company

**VIZEN**

**VIZEN<sup>DE</sup>**

**WIZER WIZER<sup>DE</sup>**

Automated inspection of medication allows real-time checking errors, the history would be left as data to manage accurate and safe dispensing and to handle medication accidents.



The compact non-stop medication dispensing, packaging and inspection systems of JVM.





## Automatic Prescription Inspection System



### Fast Vizen Upgrade

With the Fast Vizen Upgrade you can check approximately 90 pouches per minutes - a staggering of 50% increase in speed.



### Fast and accurate prescription inspection system

VIZEN reads the barcode on the filled sachet to automatically check the prescription details to verify whether right tablets are filled for the right patient with the right sachet. The information on this filling is then stored in images and texts to use them for prescription analysis, medicine tracking and administration record search to ensure patients follow exact directions safely.



### Flexible distribution

Depending one day workload, the system allows either to sort medicines into the basket without using a conveyor, or to automatically sort the medicines with a conveyor. Connected with WIZER, automatic packet strip cutting&winding, the system helps you manage automatic packaging of the inspection-complete packets and its history accurately and safely.



### Error and status alerts & intuitive GUI

12.1" touchscreen monitor is designed to support easy operation without having to use a keyboard or mouse. Inspection results and system status alerts are indicated in the screen and through voice messaging to help users identify system status even when working with other tasks.

Model	JV-VZ10*
Dimensions (WxDxH)	990 x 670 x 1,800mm
Weight	About 331kg (exclusive printer)
Display and input	Touch Screen 30.7cm (12.1")
Power consumption	300W
Power supply	120V~, 60Hz/220V-240V~, 60Hz
Operation Temperature/Humidity	0~40°C / 10~80%
Optional	Printer**



## Automatic Prescription Inspection System

### Desk Type



### Fast and accurate prescription inspection system

VIZEN DE is the automated system inspecting whether filling was done precisely following the prescription for filling-completed pouches. VIZEN DE will read the barcode when inputting filled pouches to check the prescriptions details of specific patient, scan the pouches and verify whether right tablets are filled for the right patient with the right pouch based on the registered medication information.



### Real time monitoring mis-filled medication

The histories of inspection is kept as data to manage accurate and safe filling and prevent medication accidents by analyzing prescription details, tracking and tracing medication and administration.



### Wider touch screen allows real time medication inspection

Wide touch monitor of 43.2cm(17") supports real time monitoring for pouches in inspection process to proceed faster inspection.

Model	JV-VD10*
Dimensions (WxDxH)	608 x 486 x 540mm
Weight	About 63kg
Display and input	Touch Screen 43.2cm (17")
Power consumption	120W (Max. 250W)
Power supply	100-240V~, 50/60Hz
Operation Temperature/Humidity	0~40°C / 10~80%
Optional	Multipurpose storage box, Bobbin (400 Ø, 500 Ø), Light bar**



## Prescription Inspection System



### Re-inspection of mis-filled pouches and management of history

The software re-inspect the misfilling based on the image checked by VIZEN. Easier check for the contents of mis-filled pouches and the stored data of inspection and revision history realize accurate medication inspection system.



### Can print out history of inspection

The inspection history saved on the database by VIZEN can be printed out through Check VIZEN software and be available as evidence for possible medication accidents.



## Automatic Packaging Winding & Cutting System



### Automatic winding and cutting

Based on the medicine information from ATDPS or VIZEN, the system automatically winds the packet strip after prescription and inspection, and then cuts and packages it into a specified unit, and log the results to the system.



### Automatic sorting with VIZEN

When connected with VIZEN, the system allows to automatically sort inappropriate medicines from normal ones by: 1) automatically sorting and managing medicines to the individual basket on the bottom of the system 2) using separate conveyor leading to the exit for automatic sorting and transferring the final medicine to the workbench.

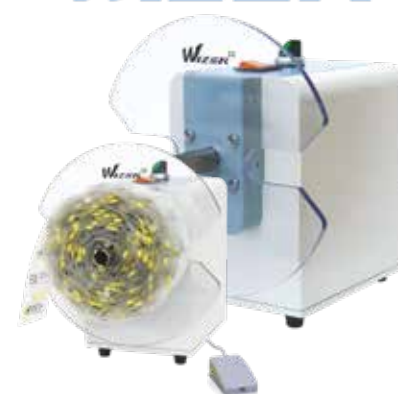


### Convenient all-in-one touchscreen

10.4" touchscreen on the front of the system is designed to support easy operation without having to use a keyboard or mouse. You can also tilt the touchscreen to make it comfortable to you.



## Semi-Auto Packet Winder



Model	JV-WD10
Dimensions (WxDxH)	250 x 337 x 293mm
Weight	About 6.5kg
Max.Speed	MAX. 300 pack / min
Power Consumption	10W
Power supply	100-240V~, 50/60Hz



## Prescription Inspection System



### Saving image of revised pouch

Check VIZEN CAM can take picture, save and keep the image as history when mis-filled pouches were found and revised. Data can be transmitted, stored to CHECK VIZEN and furnished as evidence when necessary.



Model	JV-CVC10*
Dimensions (WxDxH)	200 x 173,3 x 243,2mm
Weight	About 4,5kg
Camera Specifications	MS Lifecam studio (2 Million pixels)
Power consumption	1,5W (max. 2,4W)
Power supply	5V (PC USB Power)
Operation Temperature/Humidity	0~40°C / 10~80%



Model	JV-WZ20
Dimensions (WxDxH)	When Bobbin horizontally installed : 700 x 634 x 1,423mm When Bobbin vertically installed : 1,177 x 634 x 1,900mm
Weight	About 136kg
Winding Speed	MAX. 135 pack / minute
Allowed Packaging Content Dimensions	MAX. 200mm
Display and Input	Touch Screen
Power Consumption	150W
Power supply	100-240V~, 50/60Hz
Operating Temperature	0~40°C
Operating Humidity	10~80%



### User-friendly Bi-directional Winding

WIZER supports both clockwise and counter-clockwise winding to allow users to place where is the best for them, maximizing the workspace usage.



### Auto Slip

If the paper is too tight, the bobbin shaft temporarily stops spinning to adjust the tension of the paper to prevent it from cutting or tearing, allowing enhanced winding stability.



### Manual Winding With Foot Switch

Using Foot Switch operate the system at the set time easily and wind filled pouches conveniently.

\* Product exterior and specifications are subject to change due to the company's research and development results without any prior notice.

\*\* Printer and Multipurpose storage box are Optional